



FW23

MONS



MANU BARNARD

COVER: JESS HOTTER

FALL WINTER
TWENTY

TWENTY THREE



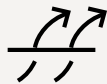
We believe in using merino wool because it's the world's highest-performing natural fibre. Merino is tried and tested in nature to withstand extremes.

PERFORMANCE MERINO





The reasons why it's the world's greatest



Manages moisture like a boss

Merino is amazing at moving moisture away from your skin, absorbing up to 30% of its own weight before feeling wet.



Merino wool is super soft

Merino wool fibres are superfine, itch free and luxuriously soft next to skin.



Cool when it's hot, warm when it's not.

Merino moves moisture away from the body, helping to regulate body temperature.



It won't stink, even if you do

Merino contains natural anti-bacterial properties that protect against odour.



It's fire resistant

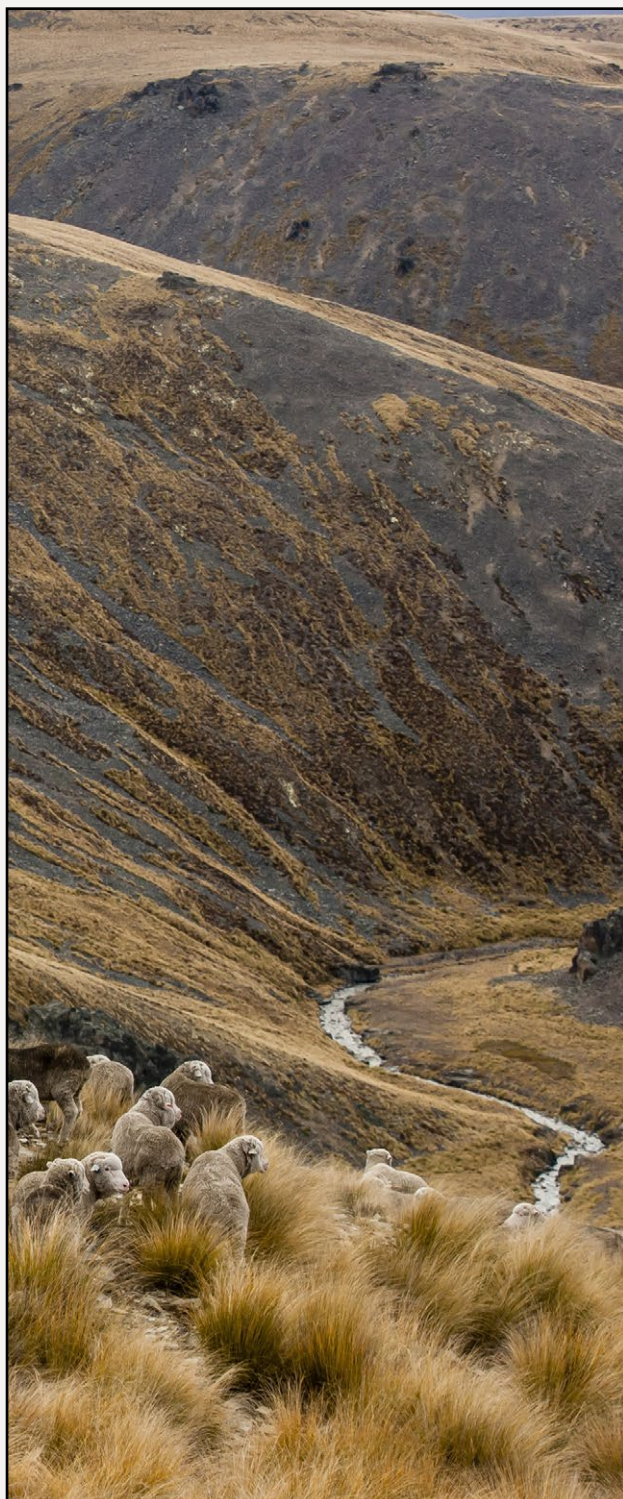
Wool is naturally high in nitrogen and water, which requires higher levels of oxygen in the surrounding environment in order to burn.



It's warm when wet

Even on the coldest days, merino will keep you warm when wet because of its natural insulating properties.

We partner with
the world's best in
the wool industry.
This ensures quality
product that respects
animals, people, places
and our future.



ETHICAL SUSTAINABLE NATURAL



The Source

ZQRX is the world's leading ethical wool - setting the highest standards for fibre quality, animal welfare as well as environment and social responsibility since 2006. RX is shorthand for the Regenerative Index. We like to think of it as a measure beyond sustainability, where the aim is continuous improvement - not a minimum standard.

For more information about about ZQRX go to: discoverzq.com/zqrx



Yarn Spinning

Our wool is spun at Suedwolle. The company is regarded as a global leader for worsted spun yarn for weaving, circular and flat knitting in pure wool and wool blends. Certified with the latest eco certifications, including ISO and Oeko-Tex standards.

Textile Manufacturing

Mons Royale is proud to partner with Shanghai Challenge Textiles (SCT), an innovative world-class manufacturer specialising in merino wool. SCT is the first manufacturer in Shanghai to be awarded the new Chinese Environmental Certification. They also understand that their workforce is the factory's real asset. Free meals, a high standard of training and rental allowances for non-local workers all contribute to ensure they have less than 5% staff turnover.



WOMEN

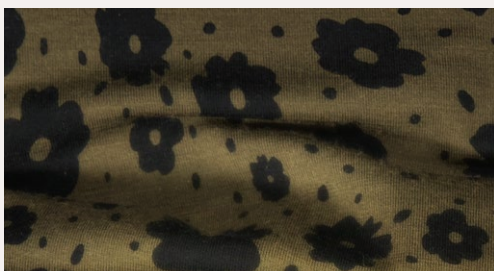




JESS HOTTER

COLOUR STORIES

WOMEN.



AORAKI.

Rich lichen and olive greens inspired by the cool native waters of the Tasman River.

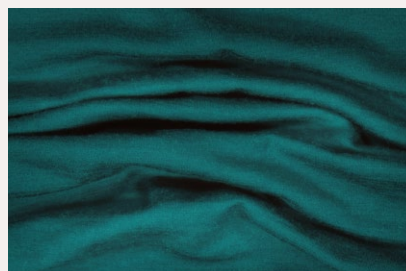
Dark olive forms the foundation of this story. Depth is formed through dyes and prints. Silty blue is added as a refreshing accent.



BLAZING TRAILS.

Inspired by the rad women that defied all odds and blazed a path through convention.

Grounded by a wild print, this orchid-based story is designed to stand out! Softer combinations with walnut and edged with black.



CHECKERS.

Old mountain style with a future twist. This story is about progression and change.

A monochromatic story with a warped checkers print that is bold and graphic. A Mons twist on the woven checkered shirt style.

THISTLE FOG.

Inspired by the foggy early alpine mornings, where bright colours are diffused with soft muted tones of purple.

Soft muted shades of purple, ranging from light to dark, bring femininity without the pink. Softened with walnut and edged up when blocked with black.

EVERGREEN.

Green is back – and so too is positive sustainability vibes. Brought to life in our Happiness Seekers story.

A rich evergreen forms the base of this – energy is added through bright green accents and grounded with black and darker shades of sycamore.



UNDERWEAR

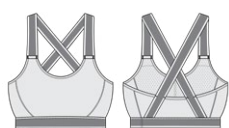
140

YEAR ROUND

STYLE INFORMATION

STELLA X-BACK BRA

A VERSATILE BRA. PERFECT FOR YOGA OR LOW-IMPACT ACTIVITIES.



Light impact

MERINOAIR-CON™

Fabric Merino Air-Con

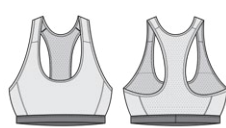
Composition 83% Merino Wool
13% Nylon 4% Elastane

Sizes XS, S, M, L, XL

Underwear | Slim Fit

SIERRA SPORTS BRA

READY FOR ANY ADVENTURE.



Light impact

MERINOAIR-CON™

Fabric Merino Air-Con

Composition 83% Merino Wool
13% Nylon 4% Elastane

Sizes XS, S, M, L, XL

Underwear | Slim Fit

STRATOS SPORTS BRA

HIGH INTENSITY MEDIUM IMPACT BRA. PERFECT FOR HIGH-INTENSITY ACTIVITIES.



Medium impact

MERINOSHIFT™

Fabric Merino Shift - Stretch

Composition 50% Merino Wool 33% Recycled Polyester
12% Nylon 5% Elastane

Sizes XS, S, M, L, XL

Underwear | Slim Fit



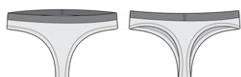
STYLE INFORMATION

140

YEAR ROUND

MERINO THONG

HIGH-PERFORMANCE
ATHLETIC SUPPORT.



MERINOSHIFT™

Fabric Merino Shift - Stretch
Composition 50% Merino Wool
 33% Recycled Polyester
 12% Nylon 5% Elastane
Sizes XS, S, M, L, XL

Underwear | Slim Fit

FOLO BRIEF

FOR ALL MISSIONS,
ALL CONDITIONS.



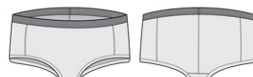
MERINOAIR-CON™

Fabric Merino Air-Con
Composition 83% Merino Wool
 13% Nylon 4% Elastane
Sizes XS, S, M, L, XL

Underwear | Slim Fit

SYLVIA BOYLEG

COMFORTABLE LEG
THAT WON'T RIDE UP.



MERINOAIR-CON™

Fabric Merino Air-Con
Composition 83% Merino Wool
 13% Nylon 4% Elastane
Sizes XS, S, M, L, XL

Underwear | Slim Fit

HANNAH HOT PANT

PERFECT FOR WHEN
THE TEMPERATURES DROP.



MERINOAIR-CON™

Fabric Merino Air-Con
Composition 83% Merino Wool
 13% Nylon 4% Elastane
Sizes XS, S, M, L, XL

Underwear | Slim Fit

STRATOS MERINO SHIFT SPORTS BRA

100587



- + Medium impact
- + Three-layer merino front with removable padding
- + High-stretch laser-cut racerback panel for increased support
- + Deep under-bust chest band.



Black 100587-1187-001 Shark 100587-1187-635



STELLA X-BACK BRA

100040



- + Light impact
- + Layered merino front with removable padding
- + Comfortable wide elastic x-back straps
- + Classic soft Mons Royale elastic under bust.



Black 100040-1169-001 Orchid / Black 100040-1169-638 Checkers 100040-1169-650



SIERRA SPORTS BRA

100167



- + Light impact
- + Layered merino front with removable padding
- + Breathable merino mesh back
- + Classic racerback cut
- + Slim-line binding for close comfort that doesn't cut in.



Black 100167-1169-001 Evergreen 100167-1169-300



MERINO THONG

100311



- + Durable, breathable and regulates body temperature
- + Mons slim-line waistband.



Black
100311-1015-001



FOLO BRIEF

100044



- + Durable, breathable and regulates body temperature
- + Mons slim-line waistband.



Black
100044-1169-001



Evergreen
100044-1169-300



Checkers
100044-1169-650



SYLVIA BOYLEG

100043



- + Durable, breathable and regulates body temperature
- + No side seams for added comfort
- + Mons slim-line waistband.



Black
100043-1169-001



Evergreen
100043-1169-300



Checkers
100043-1169-650



HANNAH HOT PANT

100041



- + Durable, breathable and regulates body temperature
- + Double-layer in-leg gusset for durability and comfort
- + Mons slim-line waistband.



Black
100041-1169-001



Orchid
100041-1169-321

- ROLLOVER FROM PREVIOUS RANGES
- CARRY FORWARD TO FUTURE
- MARKETING STYLE





BASE LAYER

STYLE INFORMATION

140

YEAR ROUND

BELLA

ACTIVE BASE FOR YEAR-ROUND CONDITIONS.



MERINOAIR-CON™

Fabric Merino Air-Con

Composition 83% Merino Wool
13% Nylon 4% Elastane

Sizes XS, S, M, L, XL

Base Layer | Slim Fit

200

ALL MOUNTAIN

CASCADE

ALL MOUNTAIN WARMTH WITH FOUR-WAY STRETCH.



MERINOFLEX

Fabric Merino Flex

Composition 81% Merino Wool
12% Nylon 7% Elastane

Sizes XS, S, M, L, XL, 2XL

Base Layer | Slim Fit

2XL SIZE ADDED

250

ULTIMATE WARMTH

OLYMPUS

WARMTH FOR THE COLDEST DAYS.



Fabric Merino Blend

Composition 97% Merino Wool
3% Elastane

Sizes XS, S, M, L, XL

Base Layer | Slim Fit

BELLA TECH TEE

100030



Black
100030-1165-001



- + Breathable Merino Air-Con mesh back panel
- + Raglan sleeves for extra mobility
- + Dropped tail hem for extra coverage
- + Contoured side body.

BELLA TECH LS

100029



Black
100029-1165-001



Orchid / Black
100029-1165-638



- + Breathable Merino Air-Con mesh back panel
- + Raglan sleeves for extra mobility
- + Dropped tail hem for extra coverage
- + Contoured side body
- + Thumb loops.



Olive Tie Dye
100671-1165-329



BELLA TECH HOOD

100028



Black
100028-1165-001



Orchid / Black
100028-1165-638

- + Half-zip hood for easy venting
- + Breathable Merino Air-Con mesh back panel
- + Raglan sleeves for extra mobility
- + Dropped tail hem for extra coverage
- + Contoured side body
- + Thumb loops.

MERINO WINTER LEGGINGS

100624



Black
100624-1169-001



- + 50% natural fibres
- + Merino wool plaited with a nylon outer
- + Spandex allows a full range of movement
- + Hip pocket to fit a phone
- + Comfortable wide waistband with a continuous adjuster drawcord
- + Full length - intended to sit on the ankle.

- ROLLOVER FROM PREVIOUS RANGES
- CARRY FORWARD TO FUTURE
- MARKETING STYLE

CASCADE MERINO FLEX 200 LS

2XL SIZE ADDED

100503



- + Straight hem
- + Flatlocked seams to prevent friction
- + Thumb loops.



Black
100503-1165-001



Evergreen
100503-1165-300



Aoraki Lily
100503-2165-335



Blazing Trails
100503-2165-599



CASCADE MERINO FLEX 200 MOCK NECK LS

2XL SIZE ADDED

100620



- + Mock neck holds warmth in
- + Straight hem
- + Flatlocked seams to prevent friction
- + Thumb loops.



Black
100620-1165-001



Evergreen
100620-1165-300



Aoraki Lily
100620-2165-335



Blazing Trails
100620-2165-599



Checkers
100620-2165-650



CASCADE MERINO FLEX 200 1/4 ZIP

2XL SIZE ADDED

100504



- + 1/4 zip
- + Straight hem
- + Flatlocked seams to prevent friction
- + Thumb loops.



Black
100504-1165-001



Evergreen
100504-1165-300



Checkers
100504-2165-650



CASCADE MERINO FLEX 200 3/4 LEGGING

2XL SIZE ADDED

100506



- + Flatlocked seams to prevent friction
- + 3/4-length base layer legging.



Black
100506-1169-001



Evergreen
100506-1169-300



Aoraki Lily
100506-2169-335



CASCADE MERINO FLEX 200 LEGGING

2XL SIZE ADDED

100505



- + Flatlocked seams to prevent friction
- + Full-length base layer legging.



Black
100505-1169-001



Evergreen
100505-1169-300



Aoraki Lily
100505-2169-335



Blazing Trails
100505-2169-599



Checkers
100505-2169-650



OLYMPUS LS

100018



- + Raglan sleeves for easy movement
- + Merino mesh underarm panels
- + Thumb loops.



Black
100018-1165-001

Thistle Cloud
100018-1165-747



OLYMPUS HALF ZIP

100017



- + Half zip for ventilation
- + Raglan sleeves for easy movement
- + Merino mesh underarm panels
- + Flatlocked seams to prevent friction
- + Thumb loops.



Black
100017-1165-001

Thistle Cloud
100017-1165-747



OLYMPUS LEGGING

100019



- + Full-length base layer legging
- + Flatlocked seams to prevent friction
- + Merino mesh panels behind the knee.



Black
100019-1169-001

Thistle Cloud
100019-1169-747







FIRST LAYER

STYLE INFORMATION

140

YEAR ROUND

ICON CLASSIC

YEAR-ROUND STAPLE FOR ON AND OFF THE MOUNTAIN.

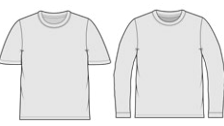


MERINOAIR-CON™
Fabric Merino Air-Con
Composition 83% Merino Wool 13% Nylon 4% Elastane
Sizes S, M, L, XL, 2XL

First Layer | Standard Fit

ICON RELAXED

YEAR-ROUND STAPLE FOR ON AND OFF THE MOUNTAIN.



MERINOAIR-CON™
Fabric Merino Air-Con
Composition 83% Merino Wool 13% Nylon 4% Elastane
Sizes S, M, L, XL, 2XL

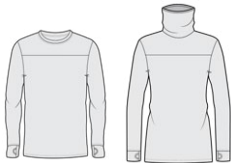
First Layer | Relaxed Fit

200

ALL MOUNTAIN

YOTEI

THE ORIGINAL LOOSE-FITTING BASE LAYER WITH 100% NATURAL WARMTH.



Fabric 100% Merino
Composition 100% Merino Wool
Sizes S, M, L, XL, 2XL

First Layer | Standard Fit

YOTEI CLASSIC

THE OG BASE LAYER



Fabric 100% Merino
Composition 100% Merino Wool
Sizes S, M, L, XL, 2XL

First Layer | Standard Fit

NEW STYLE



JESS HOTTER

ICON TEE

100288



- + Anti-odour
- + Temperature regulating
- + Breathable
- + Straight hem.



Black

100288-1221-001



Shark

100288-1221-635

ICON RAGLAN

100498



- + Anti-odour
- + Temperature regulating
- + Breathable
- + Raglan sleeves
- + Scooped hem.



Dark Olive / Black

100498-1190-330



Orchid Dawn

100498-1190-334



Shark / Black

100498-1190-636

ICON RELAXED TEE

100447



- + Anti-odour
- + Temperature regulating
- + Breathable
- + Straight hem.



Orchid

100447-1219-321



Walnut

100447-1219-751



Orchid

100447-1219-321



Olive Tie Dye

100448-1208-329



Checkers

100447-2029-650



ICON RELAXED LS

100462



- + Anti-odour
- + Temperature regulating
- + Breathable
- + Straight hem.



Black

100462-1171-001



Evergreen

100462-1221-300



Shark

100462-1221-635



Olive Tie Dye

100446-1208-329



YOTEI BF LS

100022



- + Mons standard fit
- + Long length
- + Thumb loops.



Riverbed

100022-1169-598



Orchid Dawn

100022-1169-334



Thistle Cloud

100022-1169-747



YOTEI BF HIGH NECK

100248



- + Mons standard fit
- + Long length
- + Merino neck tube provides ultimate protection and softness next to skin
- + Thumb loops.



Riverbed

100248-1169-598



Orchid Dawn

100248-1169-334



Thistle Cloud

100248-1169-747

YOTEI CLASSIC LS

NEW

100686



- + Mons standard fit
- + Long length
- + Thumb loops.



Black

100686-1139-001



Dark Olive

100686-1139-299



Orchid

100686-1219-321

PRINTED GRAPHICS

MONS
ROYALE
HAPPINESS
SEEKERS
ASSOC.

MONS ROYALE
BLAZING
TRAILS
SINCE 2009



MONS
ROYALE
MADE BY
MOUNTAINS
EST. 2009

MONS ROYALE
MADE BY MOUNTAINS

MONS ROYALE

MONS
ROYALE

- ROLLOVER FROM PREVIOUS RANGES
- CARRY FORWARD TO FUTURE
- MARKETING STYLE

MID LAYER

STYLE INFORMATION

APPROACH

ACTIVE LIGHTWEIGHT MID LAYER DESIGNED FOR HIGH-OUTPUT ACTIVITIES.



Fabric Merino Shift Fleece
Composition 83% Merino Wool 13% Nylon 4% Elastane
Sizes XS, S, M, L, XL

Mid Layer | Standard Fit

ARCADIA

THE JACK OF ALL TRADES. VERSATILE WARMTH FOR EVERY MISSION.



Fabric Merino Fleece
Composition 59% Polyester 36% Merino Wool 5% Elastane
Sizes S, M, L, XL, 2XL

Mid Layer | Standard Fit

NEW (UPDATE FROM NEVIS)

DECADE

UP MOUNTAINS, DOWN STREETS. MERINO FLEECE PERFORMANCE IN A RELAXED STYLE.



Fabric Merino Fleece
Composition 59% Polyester 36% Merino Wool 5% Elastane
Sizes S, M, L, XL, 2XL

Mid Layer | Relaxed Fit

UPDATED FABRIC



ARCADIA MERINO FLEECE JACKET

NEW

100602



- + Zipped pockets
- + Stand-up collar
- + Drop tail for extra coverage.



Black
100602-1220-001



Shark
100602-1220-635

ARCADIA MERINO FLEECE HOODY

NEW

100601



- + Zipped pockets
- + Stand-up collar
- + Drop tail for extra coverage.



Black
100601-1220-001



Dark Olive
100601-1220-299



Shark
100601-1220-635

DECADE PANTS

UPDATED

100470



- + Updated fabric: 100% recycled Pertex® Quantum ripstop knee panels shield wind and repel water
- + PFC-free DWR
- + Zipped pockets
- + Drawcord waistband
- + Elasticated ankle cuffs.



Black
100470-1220-001



Forest Floor
100470-1220-339



Shark
100470-1220-635

APPROACH MERINO SHIFT FLEECE JACKET

100611



- + Neat collar doesn't get in the way
- + Merino mesh panelling aids temperature regulation
- + Full zip for venting
- + Chest pocket sits high for easy access through the shell
- + Discrete zipped hand pockets.



Black
100611-1029-001



Orchid / Black
100611-1029-638

APPROACH MERINO SHIFT FLEECE HOOD

100610



- + Fitted three-piece hood
- + Merino mesh panelling aids temperature regulation
- + Full zip for venting
- + Chest pocket sits high for easy access through the shell
- + Discrete zipped hand pockets.



Black
100610-1029-001



Orchid / Black
100610-1029-638

DECADE MID PULLOVER

UPDATED

100472



- + Updated fabric: 100% recycled Pertex® Quantum ripstop panels shield wind and repel water
- + PFC-free DWR
- + Zipped pockets
- + Front stash pocket
- + Hem cinch for draught control.



Black
100472-1220-001



Forest Floor
100472-1220-339

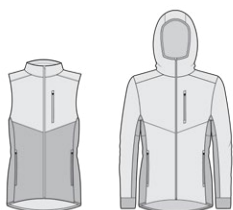
- ROLLOVER FROM PREVIOUS RANGES
- CARRY FORWARD TO FUTURE
- MARKETED STYLE



INSULATION

ARETE

VERSATILE 100% MERINO WOOL INSULATED JACKET.



Insulation 100% Merino Wool
Outer 100% Recycled Polyester
Side Body 59% Polyester 36% Merino Wool 5% Elastane
Lining 100% Nylon
Sizes S, M, L, XL, 2XL

Insulation | Standard Fit

UPDATED

ATMOS

WOOL X DOWN LIGHTWEIGHT PACKABLE PUFFER.



Insulation 70% Duck Down 30% Merino Wool
Outer 100% Recycled Polyester
Lining 100% Nylon
Sizes S, M, L, XL, 2XL

Insulation | Standard Fit

NEW

ARETE WOOL INSULATION VEST

UPDATED

100662



- + Designed to fit under a shell
- + 100% merino wool insulation
- + Merino fleece side panels for comfort while moving
- + 100% recycled Pertex® Quantum ripstop shell
- + PFC free DWR.



Black
100662-1165-001



Thistle Cloud
100662-1165-747

ARETE WOOL INSULATION HOOD

UPDATED

100639



- + Designed to fit under a shell
- + 100% merino wool insulation
- + Merino fleece side panels for comfort while moving
- + 100% recycled Pertex® Quantum ripstop shell
- + PFC free DWR.



Black
100639-1165-001



Forest Floor
100639-1165-339



Thistle Cloud
100639-1165-747

ATMOS WOOL X DOWN INSULATION HOOD

NEW

100666



- + Zipped chest and hand pockets
- + Packs into a hand pocket
- + Heat-trapping neck and wrist cuffs
- + Underarm vents
- + 100% recycled Pertex® Quantum ripstop shell
- + RDS certified down
- + PFC free DWR.



Black
100666-1171-001



Light Thistle
100666-1171-748

- ⌂ ROLLOVER FROM PREVIOUS RANGES
- ➔ CARRY FORWARD TO FUTURE
- 📷 MARKETED STYLE

FALL BIKE





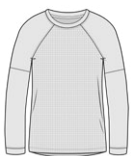


BIKE TOPS

STYLE INFORMATION

TARN

FOR THE INTENSITY OF
BIKE PARKS AND FREERIDE
ADVENTURES.



MERINOSHIFT™

Fabric Merino Shift

Composition 52% Merino Wool
35% Recycled Polyester 13% Nylon

Sizes S, M, L, XL, 2XL

First Layer | Relaxed Fit

REDWOOD

DESIGNED FOR LONG RIDES AND
MULTI-DAY ADVENTURES IN ALL
CONDITIONS.



MERINOAIR-CON™

Fabric Merino Air-Con

Composition 83% Merino Wool
13% Nylon 4% Elastane

Sizes S, M, L, XL, 2XL

First + Mid Layers | Standard Fit

ROAM CARGO

GO FURTHER IN MERINO, GO
EVEN FURTHER IN THE ROAM
CARGO.



MERINOSHIFT™

Fabric Merino Shift

Composition 52% Merino Wool
35% Recycled Polyester 13% Nylon

Sizes S, M, L, XL, 2XL

First Layer | Slim Fit

NEW

TARN MERINO SHIFT WIND JERSEY

UPDATED FABRIC

100585



- + Raglan sleeves for freedom of movement
- + Merino-lined 100% recycled Pertex® Quantum ripstop front panel to protect against the wind and chill
- + Hidden sunglasses wipe.



Black
100585-1169-001



Shark / Black
100585-1169-636



Lichen / Black
100585-1169-639

REDWOOD ENDURO VLS

100457



- + High V-neck, perfect for riding
- + Breathable merino mesh panels
- + Drop tail for extra coverage
- + Zipped back pocket for essentials
- + Hidden sunglasses wipe.



Black
100457-1146-001



Dark Olive / Black
100457-1171-330



Checkers / Black
100457-1171-652



REDWOOD WIND JERSEY

UPDATED FABRIC

100456



Black
100456-1165-001



Dark Olive
100456-1165-299

- + Merino-lined 100% recycled Pertex® Quantum ripstop front panel to protect against the wind and chill
- + Low-rise collar with a full zip
- + Drop tail for extra coverage
- + Zipped back pocket for essentials
- + Hidden sunglasses wipe.

ROAM CARGO MERINO SHIFT FULL ZIP LS

NEW

100684



Black
100684-1223-001



Shark
100684-1223-635



- + Low-rise collar
- + Full zip for easy on and off
- + Drop tail with gripper tape for extra coverage
- + Three rear compartment storage pockets.

ROLLOVER FROM PREVIOUS RANGES

CARRY FORWARD TO FUTURE

MARKETING STYLE



PANTS & SHORTS

VIRAGE

**LIGHTWEIGHT YET
DURABLE FOR TRAIL
RIPPERS.**



Fabric Stretch Wool Cordura
Composition 81% Recycled
Polyester 14% Merino Wool
45% Elastane
Sizes S, M, L, XL, 2XL

Bike | Standard Fit

MOMENTUM

**BUILT TOUGH AND DESIGNED
FOR ALL CONDITIONS.**



Fabric Merino Micro Grid
Composition 52% Polyester
39% Merino Wool 9% Spandex

Sizes S, M, L, XL, 2XL

Bike | Standard Fit

VIRAGE BIKE SHORTS

100442



Black
100442-1169-001



- + Strategically placed inseams for comfort
- + Kneepad compatible
- + Mons belt included
- + Zipped pocket holds a phone.

VIRAGE PANTS

100592



Black
100592-1169-001



Copper
100592-1169-762



- + Elasticated back waistband and power knit back panel allows for a secure fit, comfort and movement
- + Articulated knee can accommodate pads
- + Hand pockets
- + Zipped pocket holds a phone.

MOMENTUM BIKE SHORTS

100337



Black
100337-1139-001



- + Strategically placed inseams for comfort
- + Kneepad compatible
- + Mons belt included
- + Zipped pocket holds a phone.

MOMENTUM PANTS

100591



Black
100591-1139-001



- + Elasticated back waistband and power knit back panel allows for a secure fit, comfort and movement
- + Articulated knee can accommodate pads
- + Hand pockets
- + Zipped pocket holds a phone.

- ROLLOVER FROM PREVIOUS RANGES
- CARRY FORWARD TO FUTURE
- MARKETING STYLE



BIKE LINERS

LOW PRO

ULTRA-LOW PROFILE.
3mm CHAMOIS PADDING
FOR 3+HR RIDES.



MERINOAIR-CON™

Fabric Merino Air-Con
Composition 83% Merino Wool
13% Nylon 4% Elastane

Sizes S, M, L, XL, 2XL

Underwear | Slim Fit

NEW

EPIC

ALL-DAY COMFORT.
9mm CHAMOIS PADDING
FOR 6+HR RIDES.



MERINOSHIFT™

Fabric Merino Shift - Stretch
Composition 50% Merino Wool
33% Recycled Polyester
12% Nylon 5% Elastane
Sizes S, M, L, XL, 2XL

Underwear | Slim Fit

UPDATED

LOW PRO MERINO AIR-CON BIKE SHORT LINER

NEW

100642



- + Ultra-low profile 3mm padding
- + 3+hr rides
- + Gripper tape.



3MM
PADDING

**3+
HR**



Black
100642-1015-001



Dark Olive
100642-1015-299



Checkers
100642-2015-650

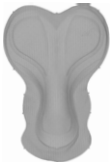
EPIC MERINO SHIFT BIKE SHORT LINER

UPDATED

100644



- + All-day comfort 9mm padding
- + 6+hr rides
- + Gripper tape
- + Mesh side panels for increased breathability.



9MM
PADDING

**6+
HR**



Black
100644-1187-001



Shark
100644-1187-635

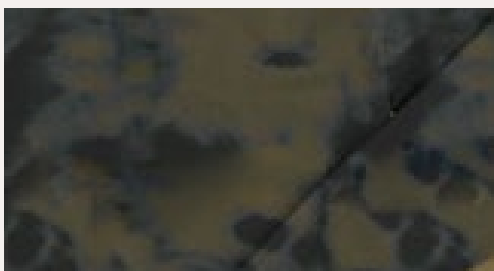
MEN





MANU BARNARD

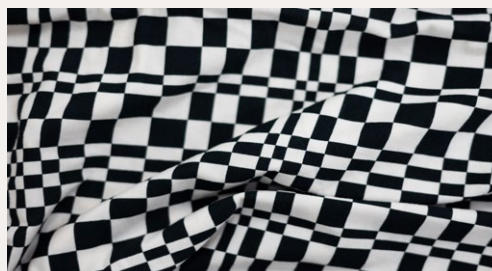
COLOUR^{MEN.} STORIES



AORAKI.

Rich lichen and olive greens inspired by the cool native waters of the Tasman River.

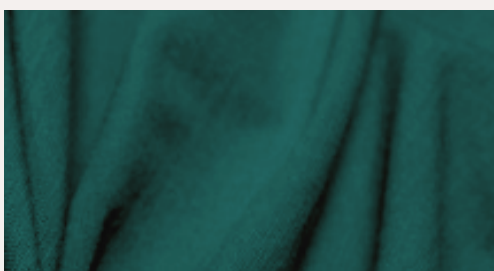
Dark olive forms the foundation of this story. Depth is formed through dyes and prints. Silty blue is added as a refreshing accent.



CHECKERS.

Old mountain style with a future twist. This story is about progression and change.

A monochromatic story with a warped checkers print that is bold and graphic. A Mons twist on the woven checkered shirt style.



EVERGREEN.

Green is back – and so too are positive sustainability vibes. Brought to life in our Happiness Seekers collection.

A rich evergreen forms the base of this story – energy is added through bright green accents and grounded with black and darker shades of sycamore.



RETRO VALLEY.

Inspired by the colours of rock fragments in the Hooker Valley resulting in a familiar retro feeling.

Vibrant earthy shades of copper, paired with muted blues give makes this collection bright and easy wearing.



UNDERWEAR

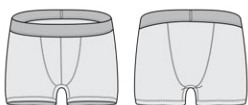
140

YEAR ROUND

STYLE INFORMATION

HOLD 'EM SHORTY

5" BOXER



MERINO AIR-CON™

Fabric Merino Air-Con
Composition 83% Merino Wool
 13% Nylon 4% Elastane
Sizes S, M, L, XL, 2XL

Underwear | Slim Fit
Shorter leg: 5"

HOLD 'EM BOXER

8" BOXER



MERINO AIR-CON™

Fabric Merino Air-Con
Composition 83% Merino
 Wool 13% Nylon 4% Elastane
Sizes S, M, L, XL, 2XL

Underwear | Slim Fit
Longer leg: 8"

HOLD 'EM SHORTY BOXER

100087



- + Short thigh length
- + Durable, breathable and regulates body temperature
- + Double-layer in-leg gusset for durability and comfort
- + No side seams for added comfort.



Black
100087-1169-001



Dark Olive
100087-1169-299



Copper
100087-1169-762

HOLD 'EM BOXER

100088



- + Durable, breathable and regulates body temperature
- + Double-layer in-leg gusset for durability and comfort
- + No side seams for added comfort.



Black
100088-1169-001



Blue Slate
100088-1169-376



Evergreen
100088-1169-300



Checkers
100088-2169-650

- ROLLOVER FROM PREVIOUS RANGES
- CARRY FORWARD TO FUTURE
- MARKETING STYLE

BASE LAYER

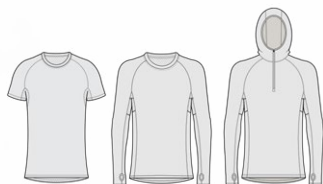
STYLE INFORMATION

140

YEAR ROUND

TEMPLE

ACTIVE BASE FOR
YEAR-ROUND CONDITIONS.



MERINO AIR-CON™

Fabric Merino Air-Con

Composition 83% Merino Wool
13% Nylon 4% Elastane

Sizes S, M, L, XL, 2XL

Base Layer | Slim Fit

200

ALL MOUNTAIN

CASCADE

ALL-MOUNTAIN WARMTH
WITH FOUR-WAY STRETCH.



MERINO FLEX

Fabric Merino Flex

Composition 81% Merino Wool
12% Nylon 7% Elastane

Sizes XS, S, M, L, XL, 2XL, 3XL

Base Layer | Slim Fit

NEW SIZES ADDED

250

ULTIMATE WARMTH

OLYMPUS

WARMTH FOR THE
COLDEST DAYS.



Fabric Merino Blend

Composition 97% Merino Wool
3% Elastane

Sizes S, M, L, XL, 2XL

Base Layer | Slim Fit



MANU BARNARD

TEMPLE TECH T-SHIRT

100080



Black
100080-1165-001



- + Breathable Merino Air-Con mesh back panel
- + Raglan sleeves for extra mobility
- + Dropped tail hem for extra coverage.

TEMPLE TECH LS

100079



Black
100079-1165-001



Blue Slate
100079-1165-376



Dark Olive / Black
100079-1165-330



Olive Tie Dye
100673-1165-329

- + Breathable Merino Air-Con mesh back panel
- + Raglan sleeves for extra mobility
- + Dropped tail hem for extra coverage
- + Thumb loops.

TEMPLE TECH HOOD

100078



Black
100078-1165-001



Dark Olive/Black
100078-1165-330

- + Half zip hood for easy venting
- + Breathable Merino Air-Con mesh back panel
- + Raglan sleeves for extra mobility
- + Dropped tail hem for extra coverage
- + Contoured side body
- + Thumb loops.

MERINO WINTER LEGGINGS

100623



Black
100623-1169-001



- + 50% natural fibres
- + Merino wool plaited with a nylon outer
- + Spandex allows a full range of movement
- + Hip pocket to fit a phone
- + Comfortable wide waistband with a continuous adjuster drawcord
- + Full length - intended to sit on the ankle.

- ROLLOVER FROM PREVIOUS RANGES
- CARRY FORWARD TO FUTURE
- MARKETING STYLE

CASCADE MERINO FLEX 200 LS

NEW XS + 3XL SIZES ADDED

100499



- + Straight hem
- + Flatlocked seams to prevent friction
- + Thumb loops.



Black
100499-1165-001



Black Storm Wash
100499-2190-574



Evergreen
100499-1165-300



Olive Tie Dye
100499-2190-329



Checkers
100499-2165-650



CASCADE MERINO FLEX 200 1/4 ZIP

NEW XS + 3XL SIZES ADDED

100500



- + 1/4 zip
- + Straight hem
- + Flatlocked seams to prevent friction
- + Thumb loops.



Black
100500-1165-001



Evergreen
100500-1165-300



Checkers
100500-2165-650



CASCADE MERINO FLEX 200 3/4 LEGGING

NEW XS + 3XL SIZES ADDED

100501



- + Flatlocked seams to prevent friction
- + 3/4-length base layer legging.



Black
100501-1169-001



Black Storm Wash
100501-2190-574



Evergreen
100501-1169-300



Olive Tie Dye
100501-2190-329



Checkers
100501-2169-650



CASCADE MERINO FLEX 200 LEGGING

NEW XS + 3XL SIZES ADDED

100502



- + Flatlocked seams to prevent friction
- + Full-length base layer legging.



Black
100502-1169-001



Evergreen
100502-1169-300



Olive Tie Dye
100502-2190-329



- ROLLOVER FROM PREVIOUS RANGES
- CARRY FORWARD TO FUTURE
- MARKETED STYLE

OLYMPUS LS

100388



- + Raglan sleeves for easy movement
- + Merino mesh underarm panels
- + Thumb loops.



Black / 9 Iron
100388-1165-119

NH ONLY



Blue Slate / Black
100388-1165-375

NH ONLY

OLYMPUS HALF ZIP

100387



- + Half zip for ventilation
- + Raglan sleeves for easy movement
- + Merino mesh underarm panels
- + Flatlocked seams to prevent friction
- + Thumb loops.



Black / 9 Iron
100387-1165-119

NH ONLY



Blue Slate / Black
100387-1165-375

NH ONLY

OLYMPUS LEGGING

100069



- + Full-length base layer legging
- + Flatlocked seams to prevent friction
- + Merino mesh panels behind the knee.



Black / 9 Iron
100069-1169-119

NH ONLY



Blue Slate / Black
100069-1169-375

NH ONLY





FIRST LAYER

STYLE INFORMATION

140

YEAR ROUND

ICON

YEAR-ROUND STAPLE
FOR ON AND OFF THE
MOUNTAIN.



MERINOAIR-CON™

Fabric Merino Air-Con
Composition 83% Merino Wool
13% Nylon 4% Elastane
Sizes S, M, L, XL, 2XL

First Layer | Standard Fit

200

ALL MOUNTAIN

YOTEI

THE ORIGINAL LOOSE-
FITTING BASE LAYER WITH
100% NATURAL WARMTH.



Fabric 100% Merino
Composition 100%
Merino Wool
Sizes S, M, L, XL, 2XL

First Layer | Standard Fit

YOTEI CLASSIC

THE OG BASE LAYER



Fabric 100% Merino
Composition 100%
Merino Wool
Sizes S, M, L, XL, 2XL

First Layer | Standard Fit

NEW STYLE



MANU BARNARD

ICON T-SHIRT

100275



- + Anti-odour
- + Temperature regulating
- + Breathable
- + Straight hem.



Black
100275-1171-001



Black
100275-1181-001



Blue Slate
100275-1181-376



Copper
100275-1181-762



Black
100275-1221-001



Evergreen
100275-1221-300



Checkers
100275-2029-650



Olive Tie Dye
100343-1208-329

ICON RAGLAN

100497



- + Anti-odour
- + Temperature regulating
- + Breathable
- + Raglan sleeves
- + Straight hem.



Dark Olive / Black
100497-1190-330



Blue Slate / Black
100497-1190-375



Black / Copper
100497-1190-754



ICON LS

100389



- + Anti-odour
- + Temperature regulating
- + Breathable
- + Straight hem.



Black
100389-1171-001



Black
100389-1221-001



Evergreen
100389-1221-300

YOTEI LS

100072



- + Mons standard fit
- + Thumb loops.



Retro Valley
100072-1169-614



Evergreen / Black
100072-1169-324



Dark Olive / Walnut
100072-1169-328



YOTEI CLASSIC LS

NEW

100685



- + Mons standard fit
- + Thumb loops.



Black
100685-1139-001



Copper
100685-1139-762



Blue Slate
100685-1218-376



YOTEI POWDER HOOD LS

100071



- + Funnel hood seals out the weather and fits seamlessly under a helmet
- + Thumb loops.



Retro Valley
100071-1169-614



Evergreen / Black
100071-1169-324



Dark Olive / Walnut
100071-1169-328

PRINTED GRAPHICS

MONS ROYALE
MADE BY MOUNTAINS

MONS
ROYALE
HAPPINESS
SEEKERS
ASSOC.

MONS
ROYALE

MONS
ROYALE



MONS
ROYALE
MADE BY
MOUNTAINS
EST. 2001

- ROLLOVER FROM PREVIOUS RANGES
- CARRY FORWARD TO FUTURE
- MARKETING STYLE

MID LAYER



STYLE INFORMATION

APPROACH

ACTIVE LIGHTWEIGHT MID LAYER DESIGNED FOR HIGH-OUTPUT ACTIVITIES.



Fabric Merino Shift Fleece
Composition 83% Merino Wool 13% Nylon 4% Elastane
Sizes XS, S, M, L, XL

Mid Layer | Standard Fit

ARCADIA

THE JACK OF ALL TRADES. VERSATILE WARMTH FOR EVERY MISSION.



Fabric Merino Fleece
Composition 59% Polyester 36% Merino Wool 5% Elastane
Sizes S, M, L, XL, 2XL

Mid Layer | Standard Fit

NEW (UPDATE FROM NEVIS)

DECADE

UP MOUNTAINS, DOWN STREETS. MERINO FLEECE PERFORMANCE IN A RELAXED STYLE.



Fabric Merino Fleece
Composition 59% Polyester 36% Merino Wool 5% Elastane
Sizes S, M, L, XL, 2XL

Mid Layer | Relaxed Fit

UPDATED FABRIC



ARCADIA MERINO FLEECE JACKET

NEW

100600



- + Zipped pockets
- + Stand-up collar
- + Drop tail for extra coverage.



Black
100600-1220-001



Dark Olive
100600-1220-299

ARCADIA MERINO FLEECE HOODY

NEW

100599



- + Zipped pockets
- + Stand-up collar
- + Drop tail for extra coverage.



Black
100599-1220-001



Dark Olive
100599-1220-299



Evergreen
100599-1220-300

DECADE PANTS

UPDATED

100469



- + Updated fabric: 100% recycled Pertex® Quantum ripstop knee panels shield wind and repel water
- + Zipped pockets
- + Drawcord waistband
- + Elasticated ankle cuffs.



Black
100469-1220-001



Evergreen
100469-1220-300



Forest Floor
100469-1220-339

APPROACH MERINO SHIFT FLEECE JACKET

100607



- + Neat collar doesn't get in the way
- + Merino mesh panelling aids temperature regulation
- + Full zip for venting
- + Chest pocket sits high for easy access through the shell
- + Discrete zipped hand pockets.



Black
100607-1029-001

Blue Slate / Black
100607-1029-375

APPROACH MERINO SHIFT FLEECE HOOD

100606



- + Fitted three-piece hood
- + Merino mesh panelling aids temperature regulation
- + Full zip for venting
- + Chest pocket sits high for easy access through the shell
- + Discrete zipped hand pockets.



Black
100606-1029-001

Blue Slate / Black
100606-1029-375

DECADE MID PULLOVER

UPDATED

100471



- + Updated fabric: 100% recycled Pertex® Quantum ripstop panels shield wind and repel water
- + Zipped pockets
- + Front stash pocket
- + Hem cinch for draught control.



Black
100471-1220-001

Forest Floor
100471-1220-339

- ROLLOVER FROM PREVIOUS RANGES
- CARRY FORWARD TO FUTURE
- MARKETED STYLE

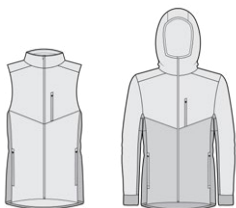


INSULATION

STYLE INFORMATION

ARETE

VERSATILE 100% MERINO WOOL INSULATED JACKET.



Insulation 100% Merino Wool
Outer 100% Recycled Polyester
Side Body 59% Polyester 36% Merino Wool 5% Elastane
Lining 100% Nylon
Sizes S, M, L, XL, 2XL

Insulation | Standard Fit

UPDATED

ATMOS

WOOL X DOWN LIGHTWEIGHT PACKABLE PUFFER.



Insulation 70% Duck Down 30% Merino Wool
Outer 100% Recycled Polyester
Lining 100% Nylon
Sizes S, M, L, XL, 2XL

Insulation | Standard Fit

NEW

ARETE WOOL INSULATION VEST

UPDATED

100661



- + Designed to fit under a shell
- + 100% merino wool insulation
- + Merino fleece side panels for comfort while moving
- + 100% recycled Pertex® Quantum ripstop shell
- + PFC free DWR.



Black
100661-1165-001



Forest Floor
100661-1165-339

ARETE WOOL INSULATION HOOD

UPDATED

100640



- + Designed to fit under a shell
- + 100% merino wool insulation
- + Merino fleece side panels for comfort while moving
- + 100% recycled Pertex® Quantum ripstop shell
- + PFC free DWR.



Black
100640-1165-001



Forest Floor
100640-1165-339



Dark Copper / Black
100640-1165-749

ATMOS WOOL DOWN LIGHTWEIGHT PACKABLE HOOD

NEW

100663



- + Zipped chest and hand pockets
- + Packs into a hand pocket
- + Heat-trapping neck and wrist cuffs
- + Underarm vents
- + 100% recycled Pertex® Quantum ripstop shell
- + RMS certified down
- + PFC free DWR.



Black
100663-1171-001



Lichen
100663-1171-331

- ROLLOVER FROM PREVIOUS RANGES
- CARRY FORWARD TO FUTURE
- MARKETED STYLE

FALL BIKE

PETER KAISER





PETER KAISER

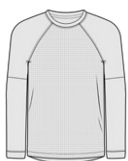
BIKE TOPS



STYLE INFORMATION

TARN

FOR THE INTENSITY OF
BIKE PARKS AND FREERIDE
ADVENTURES.



MERINOSHIFT™

Fabric Merino Shift

Composition 52% Merino Wool
35% Recycled Polyester 13% Nylon

Sizes S, M, L, XL, 2XL

First Layer | Relaxed Fit

REDWOOD

DESIGNED FOR LONG RIDES AND
MULTI-DAY ADVENTURES IN ALL
CONDITIONS.



MERINOAIR-CON™

Fabric Merino Air-Con

Composition 83% Merino Wool
13% Nylon 4% Elastane

Sizes S, M, L, XL, 2XL

First + Mid Layers | Standard Fit

ROAM CARGO

GO FURTHER IN MERINO, GO
EVEN FURTHER IN THE ROAM
CARGO.



MERINOSHIFT™

Fabric Merino Shift

Composition 52% Merino Wool
35% Recycled Polyester 13% Nylon

Sizes S, M, L, XL, 2XL

First Layer | Slim Fit

NEW

TARN MERINO SHIFT WIND JERSEY

100581



Black

100581-1169-001



Lichen / Black

100581-1169-639



Dark Copper / Black

100581-1169-749

- + Raglan sleeves for freedom of movement
- + Merino-lined
- + 100% recycled Pertex® Quantum ripstop front panel to protect against the wind and chill
- + Hidden sunglasses wipe.

REDWOOD ENDURO VLS

100143



Black

100143-1146-001



Retro Valley

100143-1171-614

Checkers / Black

100143-1171-652



- + High V-neck, perfect for riding
- + Breathable merino mesh panels
- + Drop tail for extra coverage
- + Zipped back pocket for essentials
- + Hidden sunglasses wipe.

REDWOOD WIND JERSEY

100308



Black

100308-1165-001



Dark Copper / Black

100308-1165-749

- + Low-rise collar with a full zip
- + Merino-lined
- + 100% recycled Pertex® Quantum ripstop front panel to protect against the wind and chill
- + Drop tail for extra coverage
- + Zipped back pocket for essentials
- + Hidden sunglasses wipe.

ROAM CARGO MERINO AIR-CON FULL ZIP LS

100683

NEW



Black

100683-1223-001

Dark Olive

100683-1223-299



- + Low-rise collar
- + Full zip for easy on and off
- + Drop tail with gripper tape for extra coverage
- + Three rear compartment storage pockets.

ROLLOVER FROM PREVIOUS RANGES

CARRY FORWARD TO FUTURE

MARKETING STYLE



PANTS & SHORTS

STYLE INFORMATION

VIRAGE

LIGHTWEIGHT YET DURABLE FOR TRAIL RIPPERS.



Fabric Stretch Wool Cordura
Composition 81% Recycled Polyester 14% Merino Wool 45% Elastane
Sizes S, M, L, XL, 2XL

Bike | Standard Fit

MOMENTUM

BUILT TOUGH AND DESIGNED FOR ALL CONDITIONS.



Fabric Merino Micro Grid
Composition 52% Polyester 39% Merino Wool 9% Spandex

Sizes S, M, L, XL, 2XL

Bike | Standard Fit

VIRAGE BIKE SHORTS

100441



Black
100441-1169-001



- + Strategically placed inseams for comfort
- + Kneepad compatible
- + Mons belt included
- + Zipped pocket holds a phone.

VIRAGE PANTS

100590



Black
100590-1169-001



Copper
100590-1169-762



- + Elasticated back waistband and power knit back panel allows for a secure fit, comfort and movement
- + Articulated knee can accommodate pads
- + Hand pockets
- + Zipped pocket holds a phone.

MOMENTUM 2.0 BIKE SHORTS

100336



Black
100336-1139-001



- + Strategically placed inseams for comfort
- + Velcro waist adjustment system
- + Zipped pocket for valuables
- + Kneepad compatible.

MOMENTUM BIKE PANTS




100589



Black
100589-1139-001



- + Protection on high-wear areas
- + Velcro waist adjustment system
- + Zipped pocket for valuables
- + Room for kneepads
- + Reflective prints.

-  ROLLOVER FROM PREVIOUS RANGES
-  CARRY FORWARD TO FUTURE
-  MARKETING STYLE



BIKE LINERS

STYLE INFORMATION

LOW PRO

ULTRA-LOW PROFILE.
3mm CHAMOIS PADDING
FOR 3+HR RIDES.



MERINOAIR-CON™

Fabric Merino Air-Con
Composition 83% Merino Wool
13% Nylon 4% Elastane

Sizes S, M, L, XL, 2XL

Underwear | Slim Fit

NEW

EPIC

ALL-DAY COMFORT.
9mm CHAMOIS PADDING
FOR 6+HR RIDES.



MERINOSHIFT™

Fabric Merino Shift - Stretch
Composition 50% Merino Wool
33% Recycled Polyester
12% Nylon 5% Elastane
Sizes S, M, L, XL, 2XL

Underwear | Slim Fit

UPDATED

LOW PRO MERINO AIR-CON BIKE SHORT LINER

NEW

100643



- + Ultra-low profile 3mm padding
- + 3+hr rides
- + Gripper tape.



3MM
PADDING

**3+
HR**



Black
100643-1015-001



Blue Slate
100643-1015-376



Checkers
100643-2015-650

EPIC MERINO SHIFT BIKE SHORT LINER

UPDATED

100645



- + All-day comfort 9mm padding
- + 6+hr rides
- + Gripper tape
- + Mesh side panels for increased breathability.



9MM
PADDING

**6+
HR**



Black
100645-1187-001



Dark Olive
100645-1187-299

ACCESSORIES







NECKWARMERS

STYLE INFORMATION

200

ALL MOUNTAIN

DAILY DOSE

FOR ALL MISSIONS IN ALL CONDITIONS.



Fabric Merino Flex

Composition 81% Merino Wool
12% Nylon 7% Elastane

Size OS

400

ULTIMATE WARMTH

DOUBLE UP

DOUBLE THE LAYERS
DOUBLE THE WARMTH.



Fabric 100% Merino Wool

Composition Double Layer
100% Merino Wool

Size OS

200

ALL MOUNTAIN

SANTA ROSA

OUR MOST VERSATILE
BALACLAVA. NOW IN
TWO SIZES.



Fabric Merino Flex

Composition 81% Merino
Wool 12% Nylon 7% Elastane

Size S/M L/XL

B3

THE ULTIMATE
SNUG FIT.



Fabric 100% Merino

Composition 100%
Merino Wool

Sizes S/M, L, XL

250

ULTIMATE WARMTH

OLYMPUS

WARMTH FOR THE
COLDEST DAYS.



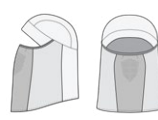
Fabric Merino Blend

Composition 97% Merino
Wool, 3% Elastane

Size OS

STORM TECH

READY FOR ANY STORM
WITH ADDED WIND
PROTECTION.



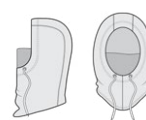
Fabric Merino Wool Fleece

Composition 59%
Recycled Polyester 36%
Merino Wool 5% Elastane

Size OS

DECADE

MERINO FLEECE
WARMTH WITH STYLE.



Fabric Merino Wool Fleece

Composition 59% Recycled
Polyester 36% Merino Wool
5% Elastane

Size OS

DAILY DOSE MERINO FLEX 200 NECKWARMER

100507



- + Single layer
- + Soft next to skin
- + Pocket packable
- + Anti-odour and breathable
- + Designed for year-round use.

Fabric Merino Flex
Composition 81% Merino Wool
 12% Nylon 7% Elastane
Size OS



Black
 100507-1171-001



Evergreen
 100507-1171-300



Olive Tie Dye
 100507-2171-329



Aoraki Lily
 100507-2171-335



Blazing Trails
 100507-2171-599



Checkers
 100507-2171-650

DOUBLE-UP NECKWARMER

100102



- + Soft next to skin
- + Double layer, double warmth.

Fabric 100% Merino Wool
Composition Double -layer
 100% Merino Wool
Size OS



Black
 100102-1171-001



Dark Olive
 100102-1171-299



Orchid
 100102-1171-321



Blue Slate
 100102-1171-376



Blue Silt
 100102-1171-597



Copper
 100102-1171-762

- ROLLOVER FROM PREVIOUS RANGES
- CARRY FORWARD TO FUTURE
- MARKETING STYLE



BALACLAVAS

SANTA ROSA MERINO FLEX 200 BALACLAVA

S/M SIZE ADDED

100509



- + Hinged for flexible positioning
- + Drop front neckline seals in warmth
- + Ponytail hole
- + Compatible with a helmet
- + Soft next to skin
- + Anti-odour and breathable.

Fabric Merino Flex

Composition 81% Merino Wool
12% Nylon 7% Elastane

Size S/M L/XL



Black
100509-1171-001



Evergreen
100509-1171-300



Olive Tie Dye
100509-2171-329



Aoraki Lily
100509-2171-335



Blazing Trails
100509-2171-599



Checkers
100509-2171-650

- ROLLOVER FROM PREVIOUS RANGES
- CARRY FORWARD TO FUTURE
- MARKETING STYLE

B3 BALACLAVA

100106



- + Soft next to skin
- + Compatible with a helmet
- + Anti-odour breathable merino.

Fabric 100% Merino Wool**Composition** 100% Merino Wool**Size** S/M L/XL

Black

100106-1171-001



Evergreen

100106-1171-300



Orchid

100106-1171-321



Copper

100106-1171-762



OLYMPUS BALACLAVA

100375



- + Hinge construction allows it to be worn two ways for supreme warmth
- + Three panels for an improved fit
- + Flatlocked seams for comfort.

Fabric Merino Blend**Composition** 97% Merino Wool, 3% Elastane**Size** OS

Black

100375-1171-001



Blue Slate

100375-1171-376



Light Thistle

100375-1171-748

NH ONLY

NH ONLY

NH ONLY



STORM TECH MERINO BALACLAVA

NEW

100658



- + Pertex® Quantum recycled polyester
- + Wind-resistant face panel
- + Mouth and nose air vents
- + Merino fleece warmth.

Fabric Merino Wool Fleece**Composition** 59% Recycled Polyester 36% Merino Wool 5% Elastane**Size** OS

Black

100658-1171-001



DECADE WOOL FLEECE HOOD

100414



- + Ultimate merino fleece warmth
- + Integrated storm facemask
- + Relaxed hood fit
- + Brushed merino interior.

Fabric Merino Wool Fleece**Composition** 59% Recycled Polyester 36% Merino Wool 5% Elastane**Size** OS

Black

100414-1169-001



Dark Olive

100414-1169-299





CAPS & BEANIES

McCLOUD MERINO BEANIE

100689



- + Double layer
- + Wear the cuff up or down
- + Soft breathable merino wool wicks moisture and stays odour free
- + Length cuff up 19cm, cuff down 26cm.

Fabric Merino Blend

Composition 50% RWS Merino Wool 50% Recycled Polyester

Size OS



Black

100689-1165-001



Orchid

100689-1165-321



Lichen

100689-1165-331



Blue Silt

100689-1165-597



Apple Green

100689-1165-655



McCLOUD GRAPHIC MERINO BEANIE

NEW

100691



- + Double layer
- + Wear the cuff up or down
- + Soft breathable merino wool wicks moisture and stays odour free
- + Length cuff up 19cm, cuff down 26cm.

Fabric Merino Blend

Composition 50% RWS Merino Wool 50% Recycled Polyester

Size OS



Black

100691-1165-001



Copper

100691-1165-762



McCLOUD POM POM MERINO BEANIE

100690



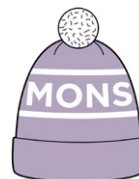
- + Double layer
- + Soft breathable merino wool wicks moisture and stays odour free
- + Length cuff up 19cm, cuff down 26cm.

Fabric Merino Blend**Composition** 50% RWS Merino Wool 50% Recycled Polyester**Size** OS

Black / White
100690-1169-092



Orchid Sun
100690-1169-336



Thistle / White
100690-1169-746

FJORD 100% MERINO BEANIE

NEW

100688



- + Fold-up cuff
- + Double layer merino wool
- + Soft breathable merino wool wicks moisture and stays odour free
- + Length cuff up 12cm, cuff down 19cm.

Fabric 100% Merino**Composition** 100% Merino**Size** OS

Black
100688-1165-001



Dark Olive
100688-1165-299



Evergreen
100688-1165-300

CABIN MERINO BEANIE

NEW

100682



- + Double layer
- + Wear the cuff up or down
- + Soft breathable merino wool wicks moisture and stays odour free
- + Length cuff up 21cm, cuff down 28cm.

Fabric Merino Blend**Composition** 50% RWS Merino Wool 50% Recycled Polyester**Size** OS

Forest Floor
100682-1165-339



Blazing Trails
100682-1165-599

CHUNKY LOGGER MERINO BEANIE

NEW

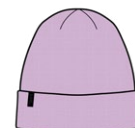
100641



- + Double layer
- + Wear the cuff up or down
- + Chunky 1 x 1 knit construction
- + Soft breathable merino wool wicks moisture and stays odour free
- + Length cuff up 21cm, cuff down 28cm.

Fabric Merino Blend**Composition** 70% RWS Merino Wool 30% Recycled Polyester**Size** OS

Charcoal Marl
100641-1165-015



Orchid Marl
100641-1165-337



Tussock Marl
100641-1165-637

ROLLOVER FROM PREVIOUS RANGES

CARRY FORWARD TO FUTURE

MARKETED STYLE

MCFISH BEANIE

100486



- + Double-layer
- + Wear the cuff up or down
- + Soft breathable merino wool wicks moisture and stays odour free
- + Length cuff up 17cm, cuff down 23cm.

Fabric 100% Merino
Composition 100% Merino
Size OS



Black
100486-1165-001



Walnut
100486-1165-751



Copper
100486-1165-762

TECH UNDER HELMET BEANIE

100112



- + Single layer
- + Flatlocked seams for under-helmet comfort
- + Anti-odour breathable merino.

Fabric 100% Merino Wool
Composition 100% Merino Wool
Size OS



Black
100112-1169-001



Evergreen
100112-1169-300



HAINES HELMET LINER

100111



- + Single layer
- + Flatlocked seams for under-helmet comfort
- + Anti-odour breathable merino
- + Depth 10cm.

Fabric 100% Merino Wool
Composition 100% Merino Wool
Size OS



Black
100111-1171-001



Evergreen
100111-1171-300



Orchid
100111-1171-321



ARCADIA HEADBAND

100687



- + Double layer
- + Soft breathable merino wool wicks moisture and stays odour free
- + Depth 10cm.

Fabric Merino Blend
Composition 50% Basolan Merino Wool 50% Acrylic
Size OS



Black / White
100687-1169-092



Forest Floor
100687-1169-339



Thistle / White
100687-1169-746



NEW

PACK CAP

100514



- + Packable brim
- + Merino wool fleece lining
- + 100% recycled polyester diamond jacquard outer UV and water repellent
- + Shock cord adjuster for a precision fit.



Black
100514-1169-001



Fabric 100% Merino fleece
Composition 100% Recycled Polyester
Size OS

VELOCITY TRAIL CAP

100580



- + Five panel
- + Soft mesh panels
- + Packable brim
- + UV-resistant fabric
- + Adjustable clip strap with stretch.



Black
100580-1171-001



Fabric 100% Diamond Jacquard
Composition 100% Polyester
Size OS

WOOL CONNOR CAP

100121



- + Classic six panel
- + Flat brim
- + Snap back adjuster for a precision fit
- + Signature 3D embroidery.



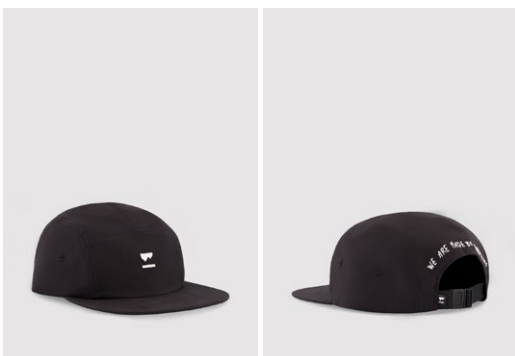
Black
100121-1035-001



Fabric Wool Blend
Composition 70% Acrylic 30% Wool
Size OS

RIDGELINE 5-PANEL CAP

100211



- + Five panel
- + Flat brim
- + Adjustable clip strap with stretch.



Black
100211-1169-001



Toffee
100211-1169-282



Fabric Organic Cotton
Composition 100% Organic Cotton
Size OS

- ROLLOVER FROM PREVIOUS RANGES
 CARRY FORWARD TO FUTURE
 MARKETING STYLE

SOCKS





JESS HOTTER

PRO LITE MERINO SNOW SOCK

100594



Grey Marle
100594-1169-036



Orchid Sun
100594-1169-336

- + Unisex style
- + Lightweight sock
- + Above-calf length
- + Heel cushioning
- + Ribbed arch and ankle support
- + Mesh ventilation zones for breathability
- + Non-slip folded rib band
- + Seamless toe box prevents blisters
- + Reinforced 100% merino yarn is light and durable.

Composition 50% Merino Wool 43% Nylon
7% Elastane

Size S/M/L/XL

ATLAS MERINO SNOW SOCK

100593



Black
100593-1169-001



Toffee
100593-1169-282



Burnt Sage
100593-1169-368



Dusty Pink
100593-1169-134



Thistle Cloud
100593-1169-747



Riverbed
100593-1169-598



Olive Tie Dye
100616-1192-329



Aoraki Lily
100616-1192-335

- + Unisex style
- + Lightweight sock
- + Above-calf length
- + Heel and toe cushioning
- + Ribbed arch and ankle support
- + Mesh ventilation zones for breathability
- + Non-slip folded rib band
- + Seamless toe box prevents blisters.

Composition 60% Merino Wool 35%
Nylon 5% Elastane

Size XS/S/M/L/XL

ULTRA CUSHION MERINO SNOW SOCK

100595



Black
100595-1037-001



Orchid Sun
100595-1037-336



Evergreen / Apple
100595-1037-338

- + Unisex style
- + Performance fit
- + Knee length
- + Medium-cushioned foot bed
- + Lightly cushioned shin pad
- + Arch and ankle support
- + Breathable mesh panels
- + Non-slip folded rib band
- + Seamless toe box prevents blisters.

Composition 75% Merino Wool 22% Nylon
3% Elastane

Size S/M/L/XL

ATLAS CREW SOCK

100553



Black
100553-1192-001



Black
100553-1169-001



Black Check
100553-1206-774



Olive Tie Dye
100554-1169-329



Aoraki Lily
100554-1169-335

- + Unisex style
- + Mid-length 8" crew
- + Light heel and toe cushioning
- + Durable non-slip pique construction
- + Honeycomb mesh ventilation zones
- + Blended merino yarn is light, strong, pill resistant and durable.

Composition 59% Merino Wool 36% Nylon 5% Elastane

Size S/M/L/XL

ATLAS MERINO ANKLE SOCK

100647



Black
100647-1169-001



Grey Marle
100647-1169-036



- + Unisex style
- + Ankle length
- + Lightweight heel and toe cushioning
- + Durable non-slip pique construction
- + Honeycomb mesh ventilation zones
- + Seamless toe box prevents blisters
- + Temperature regulating and odour resistant
- + Reinforced 100% merino yarn is light and durable.

Composition 59% Merino Wool 36% Nylon 5% Elastane

Size S/M/L/XL

SIGNATURE CREW SOCK

100555



Black / White
100555-1160-092



Black Candy
100555-1160-391



College Grey
100555-1160-781

- + Unisex style
- + Mid-length 8" crew
- + Medium-cushioned foot bed
- + Arch support
- + Breathable mesh panels
- + Non-slip folded rib band
- + Seamless toe box prevents blisters.

Fabric Merino Blend

Composition 70% Merino Wool 27% Nylon 3% Elastane

Size S/M/L/XL

ROLLOVER FROM PREVIOUS RANGES

CARRY FORWARD TO FUTURE

MARKETING STYLE

VOLTA GLOVE LINER

100115



- + 100% merino liner increases glove warmth
- + Anti-odour breathable merino.

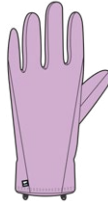
Fabric 100% Merino Woo
Composition 100% Merino Wool
Size S-XL



Black
 100115-1165-001



Evergreen
 100115-1165-300



Orchid
 100115-1165-321



OLYMPUS GLOVE LINER

100042

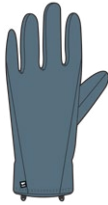


- + Use as a liner or a glove
- + Anti-odour breathable merino.

Fabric Merino Blend
Composition 97% Merino Wool
 3% Elastane
Size S-XL



Black
 100042-1165-001



Blue Slate
 100042-1165-376



NH ONLY

NH ONLY

MONS BELT

100342



- + Made with signature Mons Royale high-retention elastic
- + Dependable buckle.

Fabric Nylon Elastane
Composition Nylon Elastane
Size OS

Black
 100342-1198-001



AFTERBANG SUSPENDERS

100131



- + Strong dependable clips
- + Fully adjustable for a perfect fit
- + X-back sits comfortably between shoulder blades.

Fabric Nylon Elastane
Composition Nylon Elastane
Size OS

Black / White
 100131-1169-092



MAGNUM WOOL FLEECE MITTS

100512



- + Durable polyester outer, brushed merino interior
- + Palm view reads "HOLD" / "TIGHT"
- + Wide folded cuff with a joining clip.

Fabric Merino Wool Fleece
Composition 59% Recycled Polyester 36% Merino Wool 5% Elastane
Size XS-XL



Black
100512-1165-001



ELEVATION WOOL FLEECE GLOVES

100513



- + Durable polyester outer, brushed merino interior
- + Palm view reads "HOLD" / "TIGHT"
- + Wide folded cuff with a joining clip.

Fabric Merino Wool Fleece
Composition 59% Recycled Polyester 36% Merino Wool 5% Elastane
Size XS-XL



Black
100513-1165-001



AMP WOOL FLEECE GLOVE

100376



- + Durable polyester outer
- + Touch-screen capability
- + Extra grippy silicon palms
- + Joining clip.

Fabric Merino Wool Fleece
Composition 59% Recycled Polyester 36% Merino Wool 5% Elastane
Size S-XL



Black
100376-1165-001



Dark Olive
100376-1165-299



SIZING CHARTS

Additional sizes added to Cascade product.

WOMENS

TOPS, BOTTOMS & UNDERWEAR

BODY MEASUREMENTS			MONS SIZE						
			XS	S	M	L	XL	2XL	3XL
BODY MEASUREMENTS	BUST	cm	82	87	92	97	104	111	118
		inch	32	34	36	38	41	44	46
	WAIST	cm	66	71	76	81	88	95	102
		inch	26	28	30	32	35	37	40
	HIP	cm	90	95	100	105	112	119	126
		inch	35	37	39	41	44	47	50

COMPARE THESE BODY MEASUREMENTS WITH YOUR OWN.

SHORTS LENGTH

		XS	S	M	L	XL	2XL	3XL
IN-LEG LENGTH	MOMENTUM	36.5	37	37.5	38	38.5	–	–
	cm							
IN-LEG LENGTH	VIRAGE	31.5	32.5	33.5	34.5	35.5	–	–
	cm							

COMPARE WITH YOUR OWN SHORTS OR TAKE A MEASUREMENT.

MENS

TOPS, BOTTOMS & UNDERWEAR

			MONS SIZE						
			XS	S	M	L	XL	2XL	3XL
BODY MEASUREMENTS	CHEST	cm	89	95	101	107	113	121	129
		inch	35	37	39	42	44	47	51
	WAIST	cm	75	81	87	93	99	107	115
		inch	20	31	34	37	39	42	45
	HIP	cm	88	94	100	106	112	120	130
		inch	35	37	39	42	44	47	51

COMPARE THESE BODY MEASUREMENTS WITH YOUR OWN.

SHORTS LENGTH

		XS	S	M	L	XL	2XL	3XL
IN-LEG LENGTH	MOMENTUM	–	32.7	32.95	33.2	33.45	33.7	–
	cm							
IN-LEG LENGTH	VIRAGE	–	33.0	33.25	33.5	33.75	34.0	–
	cm							

COMPARE WITH YOUR OWN SHORTS OR TAKE A MEASUREMENT.

ACCESSORIES

SOCKS

UNISEX	MONS SIZE			
	SMALL	MEDIUM	LARGE	X-LARGE
EU	35 - 38	39 - 41	42 - 44	45 - 47
UK (WOMEN)	2 - 5	6 - 8	9 - 11	
US (WOMEN)	4 - 7	8 - 10	11 - 13	
UK (MEN)	2.5 - 5	6 - 7.5	8 - 9.5	10.5 - 12
US (MEN)	3.5 - 6	7 - 8.5	9 - 10.5	11.5 - 13

GLOVES

UNISEX	MONS SIZE				
	X-SMALL	SMALL	MEDIUM	LARGE	X-LARGE
HAND WIDTH					
CM	18.5	19.5	21	22.5	23.5
IN	7.5	8	8.5	9	9.5
HAND LENGTH					
CENTIMETRES	17	18	19	20	21
INCHES	6.5	7	7.5	8	8.5

HAND WIDTH MEASURE AROUND YOUR KNUCKLES

HAND LENGTH MEASURE FROM THE TOP OF YOUR LONGEST FINGER TO THE BOTTOM OF YOUR PALM.

BALACLAVAS

UNISEX	MONS SIZE		
	S/M	L/XL	OS
HEAD CIRCUMFERENCE			
CENTIMETRES	57	61	61
INCHES	22.5	24	24

HEAD MEASUREMENT MEASURE AROUND YOUR HEAD.

MONS MEASUREMENT GUIDE



CHEST/BUST

Measure under your arms around the fullest part of your chest/bust

WAIST

Measure around your waist across your belly button

HIP

Measure at your widest point, *not* at the waistband.

SHORT LENGTH

Measure inside the shorts along the fold, from the crotch to the hem.

INSIDE LEG

Measure from the crotch down.



OUR FITS

MULTIPLE FITS MEANS PERFORMANCE AT EVERY COMFORT LEVEL



SLIM FIT

Classic performance fit with a figure-hugging silhouette. Perfect for layering.



STANDARD FIT

This fit follows the line of the body but sits away. Comfort and versatility.



RELAXED FIT

A loose fit for everyday comfort. This garment will hang off the body.

FABRICS GLOSSARY

BASE LAYER / FIRST LAYER FABRICS

Merino Cool (Merino Tencel) Weight 130gsm Composition 52% Merino Wool 35% Lyocell 13% Nylon	MERINO COOL	130
Merino Air-Con™ (Corespun) Weight 140gsm Composition 83% Merino Wool 13% Nylon 4% Elastane	MERINO AIR-CON™	140
Merino Shift™ (Corespun) Weight 140gsm Composition 52% Merino Wool 35% Recycled Polyester 13% Nylon	MERINO SHIFT™	
Merino Shift™ - Stretch (CORESPUN) Weight 170gsm Composition 50% Merino Wool 33% Recycled Polyester 12% Nylon 5% Elastane		
Merino Flex (Corespun) Weight 180gsm Composition 81% Merino Wool 12% Nylon 7% Elastane	MERINO FLEX	200
100% Merino (100% Merino Single Jersey) Weight 190gsm Composition 100% Merino Wool	MERINO 100%	
Merino Blend (MERINO BLEND SINGLE JERSEY) Weight 250gsm Composition 97% Merino Wool 3% Elastane		250

WARMTH RATING

Merino Jersey (MERINO PLAITED JERSEY)
Weight 310gsm
Composition 50% Merino Wool 40% Nylon 10% Elastane

MIDLAYER FABRICS

Merino Tencel (MERINO TENCEL TERRY)
Weight 225gsm
Composition 56% Merino Wool 38% Lyocell 6% Elastane

Merino Fleece
Weight 265gsm
Composition 59% Polyester 36% Merino Wool 5% Elastane

Merino Shift Fleece (MERINO RECYCLED SHIFT GRIDLOCK)
Weight 300gsm
Composition 65% Merino Wool 25% Recycled Polyester 9% Nylon 1% Elastane

INSULATION

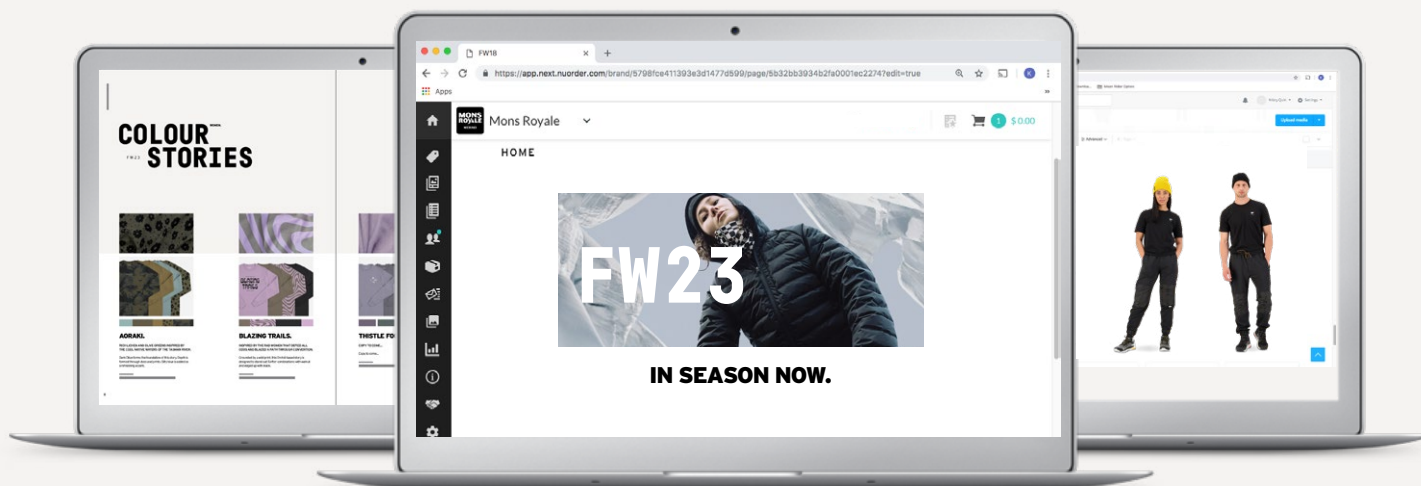
100% Merino Insulation
Merino Insulation - 80gsm - 100% Merino Wool
Merino Fleece Panels - 265gsm - 59% Polyester 36% Merino Wool 5% Elastane
Ripstop Outer - 58gsm - 100% Recycled Polyester
Lining 100% Nylon

Wool x Down Insulation
Insulation: 70% Duck Down 30% Merino Wool
Outer: 100% Recycled Polyester
Lining: 100% Nylon

SHORTS / PANTS FABRICS

Merino Micro Grid (STRETCH DOUBLE WEAVE MICRO GRID)
Weight 255gsm
Composition 52% Polyester 39% Merino Wool 9% Spandex

Merino Wool & Bottles (STRETCH PLAIN WEAVE WITH WOOL)
Weight 137gsm
Composition 81% Recycled Polyester 14% Merino Wool 5% Elastane



We continue to increase our digital B2B tools and because we launch our ranges in the Southern Hemisphere first, our assets are always delivered ahead of the pack. Below are our key platforms to support our retail partners.

NUORDER - B2B ORDERING PLATFORM

Work with NuOrder for both prebook ordering and in-season re-orders. NuOrder helps save time and reduces mistakes. Please talk to your Mons Royale representative to learn more.

BRANDKIT - DIGITAL MARKETING ASSET LIBRARY

You will find all of our marketing assets for both brand and seasonal marketing at: monsroyale.brandkit.io. Please talk to your Mons Royale representative to order point of sale assets.

MONS HEAD TO TOE DISPLAY SYSTEM

We also now offer two Mons Royale freestanding display units, a Dual Tower and Hang Bar. The Dual Tower combines a boxed display for base layers with a hanging display for our accessories range. Both are interchangeable for seasonal collections. Please talk to your Mons Royale representative to learn more.



DUAL TOWER



HANG BAR



DIMENSIONS (H x W x D)

DUAL TOWER *excluding prongs

1630 x 390 x 280 mm

5' 3" x 16" x 22' inches

*Length of prongs: 250 mm



HANG BAR

1350 x 400 x 280 mm

4' 4" x 16" x 11" inches



BASE LAYER BOX

190 x 127 x 77 mm

7.5" x 5" x 3" inches

Quantity of boxes needed to fit Dual Tower: 36

PACKAGING

We have phased out 90% of the virgin plastic from our hang tags and accessories, replacing it with recycled and natural alternatives. Our packaging and swing tags are printed using vegetable-based inks on FSC-Certified paper while our BioBags are made from cornstarch and printed with vegetable-based inks which makes them compostable.



[illegible]

CONTACT

AUSTRIA

Agentur Martin Schwaiger
P: +43 6 643 200 026
E: Martin@martinschwaiger.at

Showroom Bergheim/Salzburg:
BRANDBOXX A6, 3. Stock

Showroom Innsbruck:
BUSINESSPARK, 3. Stock

BENELUX

Edge Trading B.V.
Jan Tademaweg 36
2031 CV Haarlem, Netherlands
Contact: Ramon Mulder
P: +31 6 52 41 64 49
E: ramon@edgetrading.nl

CZECH REPUBLIC

Ses Sports S. R. O.
Jankovcova 53
170 00 Praha 7, Czech Republic
Contact: Martin Cermak,
Petr Faltyssek
P: +420 234 60 27 45
E: office@nitro.cz

DENMARK

Skitech ApS
Golfvej 10
7400 Herning
Denmark
Contact: Kim Koch & Frederik Kühl
P: +45 9712 1612
F: +45 9712 2412
E: info@skitech.dk
W: skitech.dk

FRANCE

Showroom Le 13
3 Rue du Bulloz, Parc des Glaisins
74940 Annecy le Vieux
Contact: David Pezier
P: +33 6 09 89 52 34
E: contact@showroomle13.com
W: showroomle13.com

FINLAND

White Balance Oy
Lemuntie 3-5
00510 Helsinki, Finland
P: +358 45 129 4896
E: sales@whitebalance.fi
W: whitebalance.fi

GERMANY

TeamBreyer Agency GmbH & Co. KG
Himmelgeister Strasse 88
40225 Düsseldorf, Germany
P: +49 211 97 17 91 73
E: info@teambreyer.com

ICELAND

Fjallahjól ehf
Grenigrund 14, 200 Kopavogur
P: +354 823 5017
E: aronandri@gmail.com

ITALY

Nitro Distribution Italia srl
Via Aldo Moro 51
38062 Arco di Trento (TN), Italy
P: +39 0464 514098
E: nitro@nitro.it
W: nitro.it

NORWAY

Roxee Sport AS
Orkidehøgda 2
3051 Mjøndalen, Norway
Contact: Robert Hoff
P: +47 32 87 72 22
E: robert@roxee.no
W: roxee.no

POLAND

Forest Agency
Na Polach 106B lok. 1,
31-344 Kraków, Poland
Contact: Aga Piotrowska
P: +48 798 743 493
E: info@forestagency.pl
W: forestagency.pl

ROMANIA

Openbox Consulting SRL
Calea Mosilor, 62-68,
Bucuresti, Romania
P: +40 763 670 767
E: alina@openbox.ro

SWEDEN

Combistyle Scandinavia
Nybovägen 13
830 13 Åre, Sweden
Contact: Martin Krejci
P: +46 70 623 27 04
E: martin@combistyle.se

SWITZERLAND

Arcs Agency
Schoenauring 32
8052 Zurich, Switzerland
Contact: Saemi Thuering
P: +41 76 432 13 48
E: saemi@arcs-agency.ch
W: arcs-agency.ch

UK

Groove Armada Ltd
Selbourne House, Rectory Road
Campton, Bedfordshire,
United Kingdom, SG17 5PF
Contact: Rob Glenister
P: +44 1462 812 144
E: rob@groovearmada.net
W: groovearmada.net

NEW ZEALAND OFFICE

1 Cliff Wilson Street
Lake Wanaka, New Zealand
P: +64 3 443 4178
E: sales@monsroyale.com
E: marketing@monsroyale.com

NORTH AMERICA OFFICE

800-885 West Georgia Street
Vancouver, British Columbia
V6C 3H1, Canada
Contact:
Hamish Elliott
P: +1 778 871 9981
E: hamish.elliott@monsroyale.com

EUROPE OFFICE

Leopoldstrasse 34
6020 Innsbruck, Austria
Contact: Holger Blomeier
P: +43 512 312 355
E: europe@monsroyale.com

ONLINE

monsroyale.com
facebook.com/monsroyale
instagram.com/monsroyale



*Hamish, Ted, Hannah and Frankie at Dalrachney Station.
(The farm where Hannah spent her childhood).*

OUR FOUNDERS

**A designer and
a pro-skier - both farmers,
Hannah and Hamish Acland
started Mons Royale
in 2009.**

Coming from high country farms in New Zealand,
they both have a natural affinity for merino wool and the
mountains in which the wool is grown.

Hamish's skiing and Hannah's design background combined
with their farming roots have given the brand an authentic
platform to design high-performance merino apparel for mountain
sports. Hannah continues to lead the brand's design
direction with Hamish as CEO.

Their team of two has grown globally to over
forty staff across three offices: Innsbruck (Austria),
Vancouver (Canada) and Wānaka (New Zealand).





FW 23